

**Schedule of Development for Master Layout Plan Submission**

**(Application No. A/H8/373)**

Site Area	2,757m <sup>2</sup>
Gross Floor Area (GFA)	Not exceeding 41,340.7m <sup>2</sup> #
Plot Ratio	Not exceeding 15
Building Height (main roof)	Not exceeding 165mPD
No. of Storeys	Not exceeding 50
No. of Hotel Rooms	Not exceeding 1,000
Average Hotel Room Size	41m <sup>2</sup>
Car Parking Spaces	Maximum 20
Loading/Unloading Bays	Maximum 10
Motorcycle Parking Spaces	5
Lay-bys - Taxi & Private Car - Single Deck Tour Bus	4 3

Notes

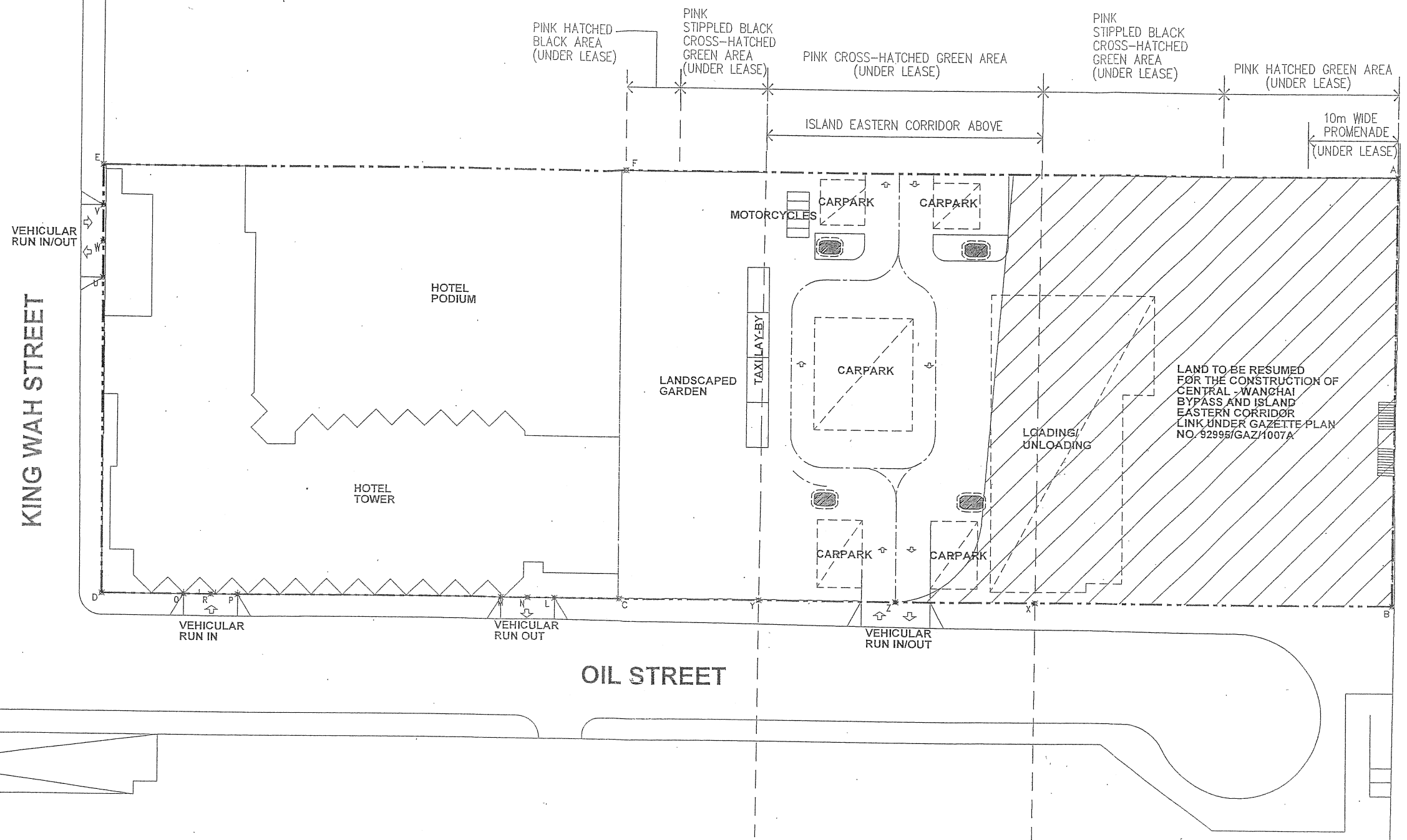
# GFA for the hotel excludes area for the back of house facilities.

Development Schedule

- The hotel has been completed in December 2008.
- The approved scheme originally includes a Cultural/Leisure/Tourist Related Activities Complex and waterfront promenade in the northern part of the site. However, they could not be implemented due to the resumption of the concerned area under the Central-Wan Chai Bypass and Island Eastern Corridor Link Project (CWB Project). On 27.7.2007, the northern part of the application site was rezoned from "Comprehensive Development Area (1)" to "Other Specified Uses" annotated "Landscaped Deck over CWB Tunnel Portal", "Open Space" and 'Road' on the draft North Point Outline Zoning Plan No. S/H8/21 to reflect the alignment of the CWB Project and the associated facilities. In this connection, the Metro Planning Committee of the Town Planning Board on 4.3.2011 agreed to delete approval conditions (c) and (f) and amend approval conditions (a) and (b) of the approved application No. A/H8/373.

MPC date  
10/06/2005.

**PLEASE RETURN  
TO PEC  
AFTER USE**



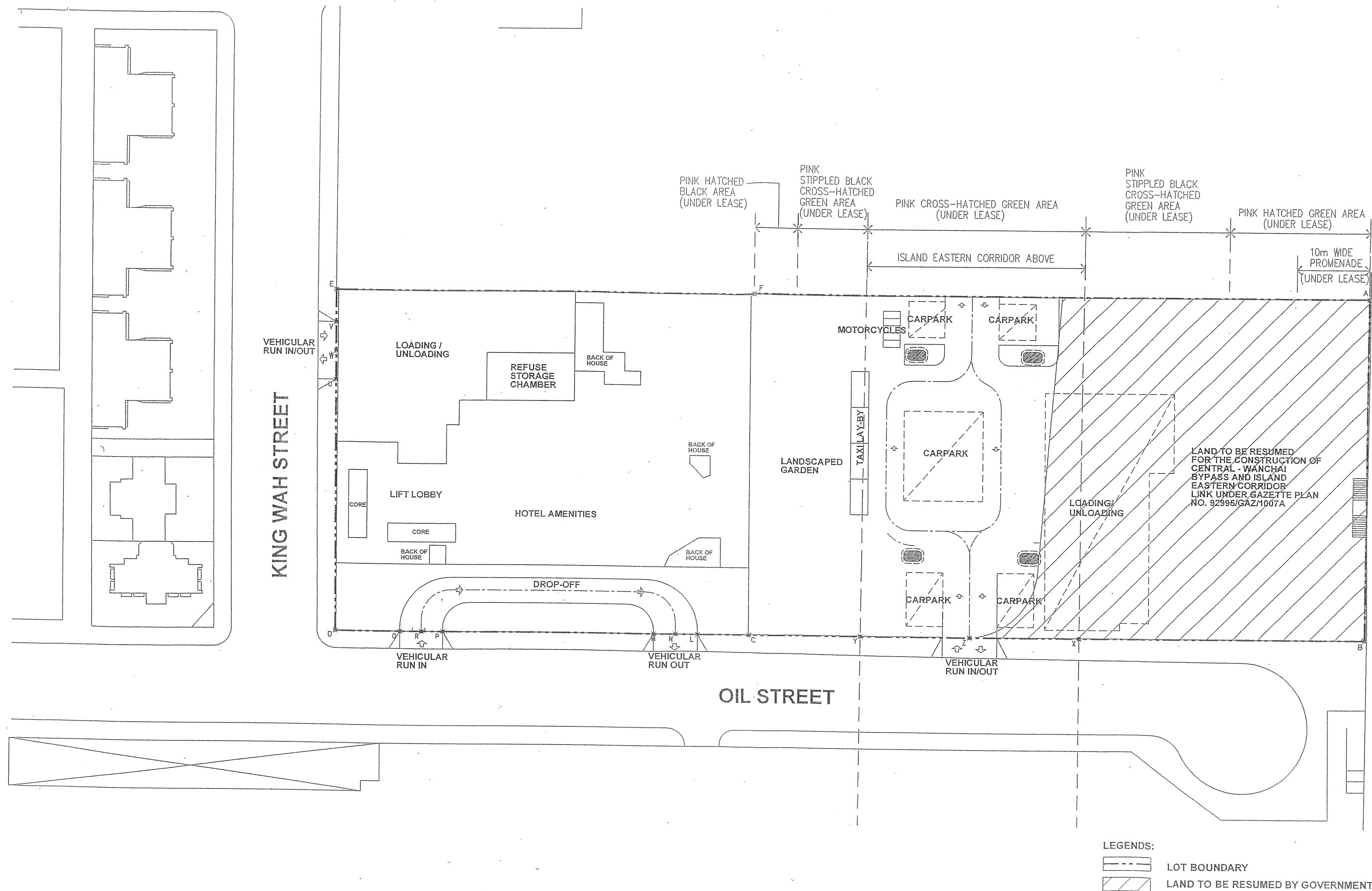
茲證明城市規劃委員會已根據城市規劃條例第4A(3)條的規定而於  
二零零五年六月十日批准本總綱發展藍圖。  
I hereby certify, as required under S.4A(3) of the Town Planning Ordinance, that this  
Master Layout Plan was approved by the Town Planning Board on 10. 6. 2005.

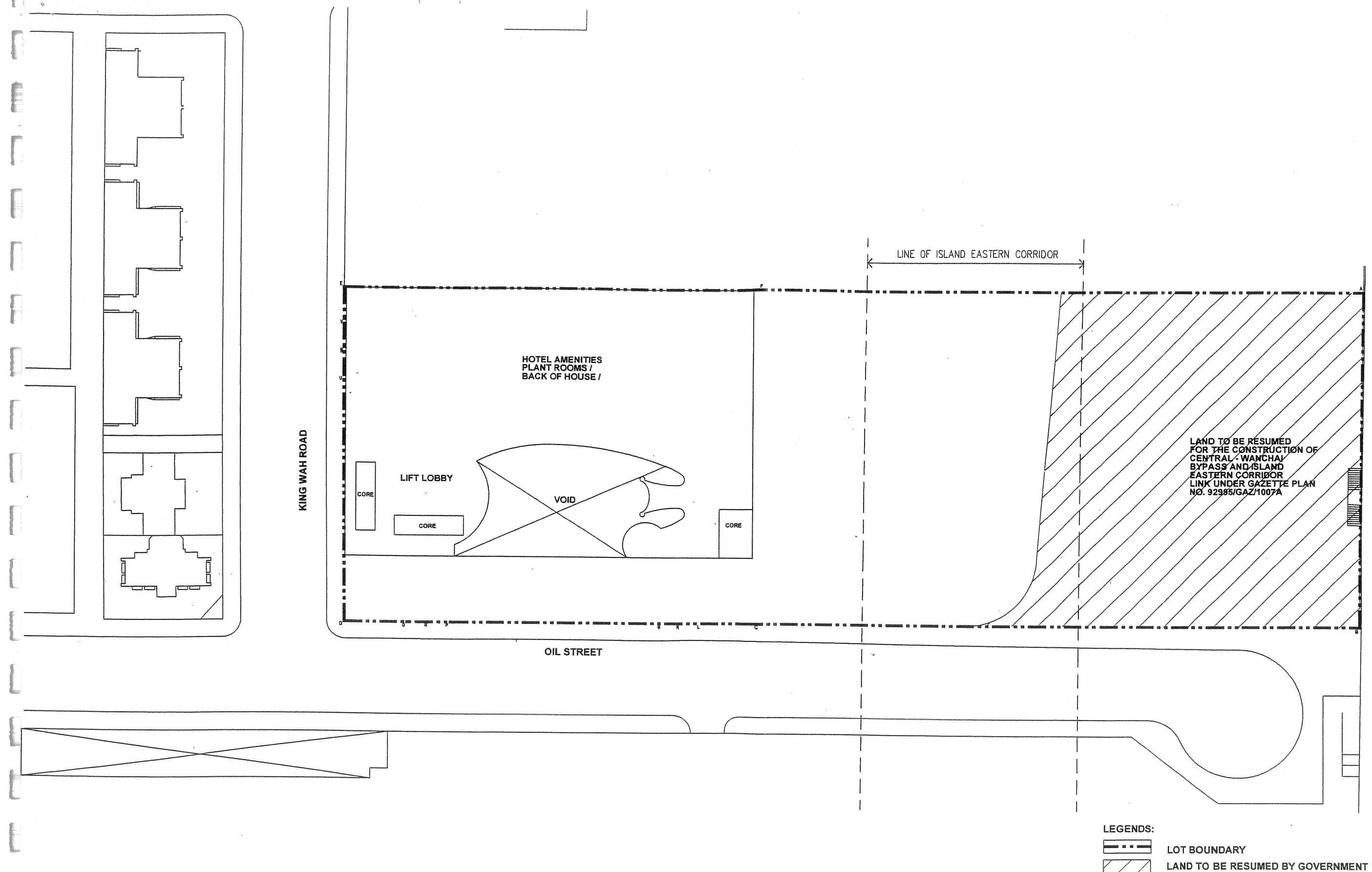
signed Thomas CHOW 周達明  
Chairman, Town Planning Board 城市規劃委員會主席 簽署

LEGENDS:

--- LOT BOUNDARY

/// LAND TO BE RESUMED BY GOVERNMENT

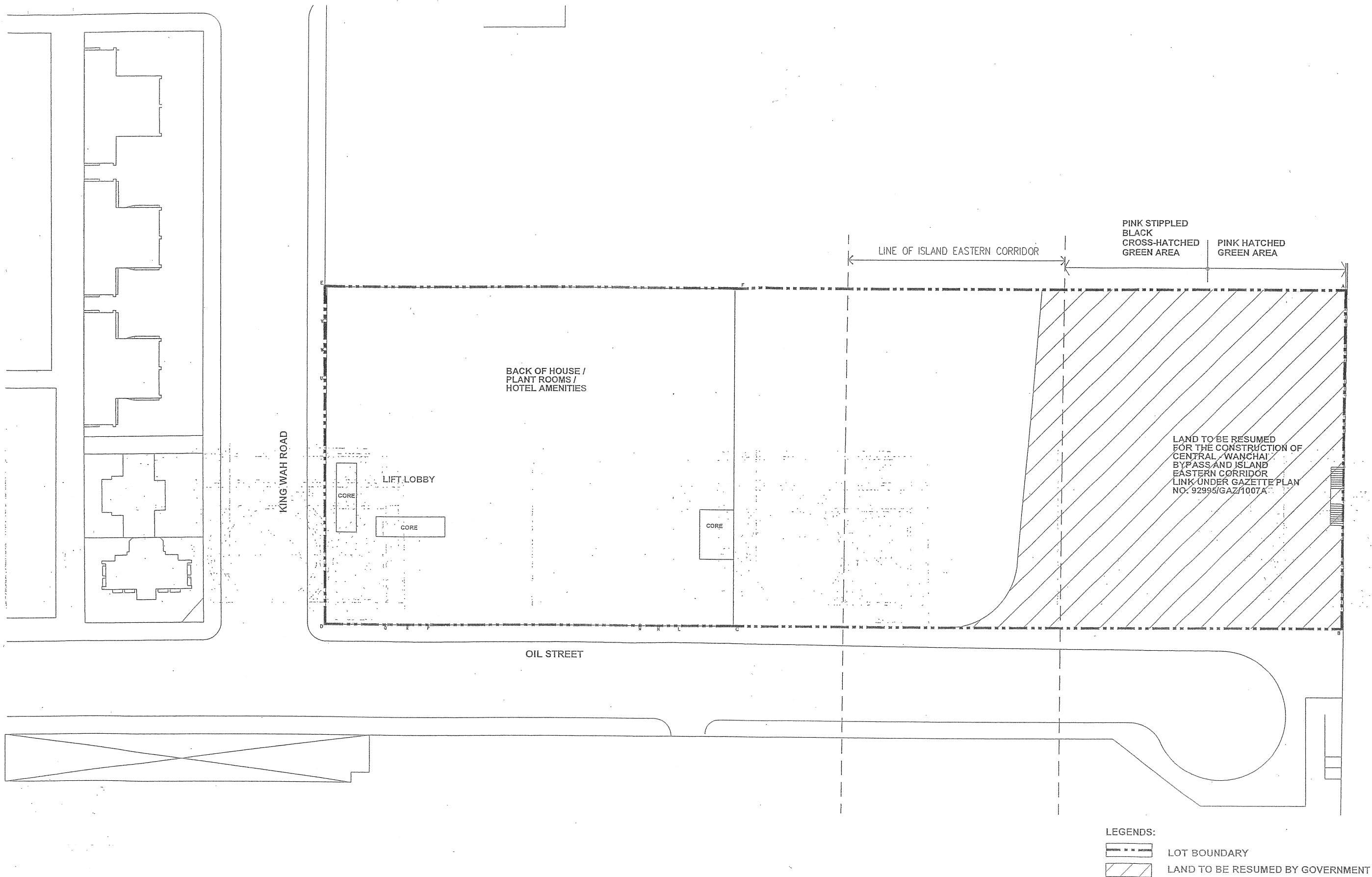




FOR 15-17 OIL STREET, NORTH POINT (LOT NO. I.L.7106S.A &EXT.)

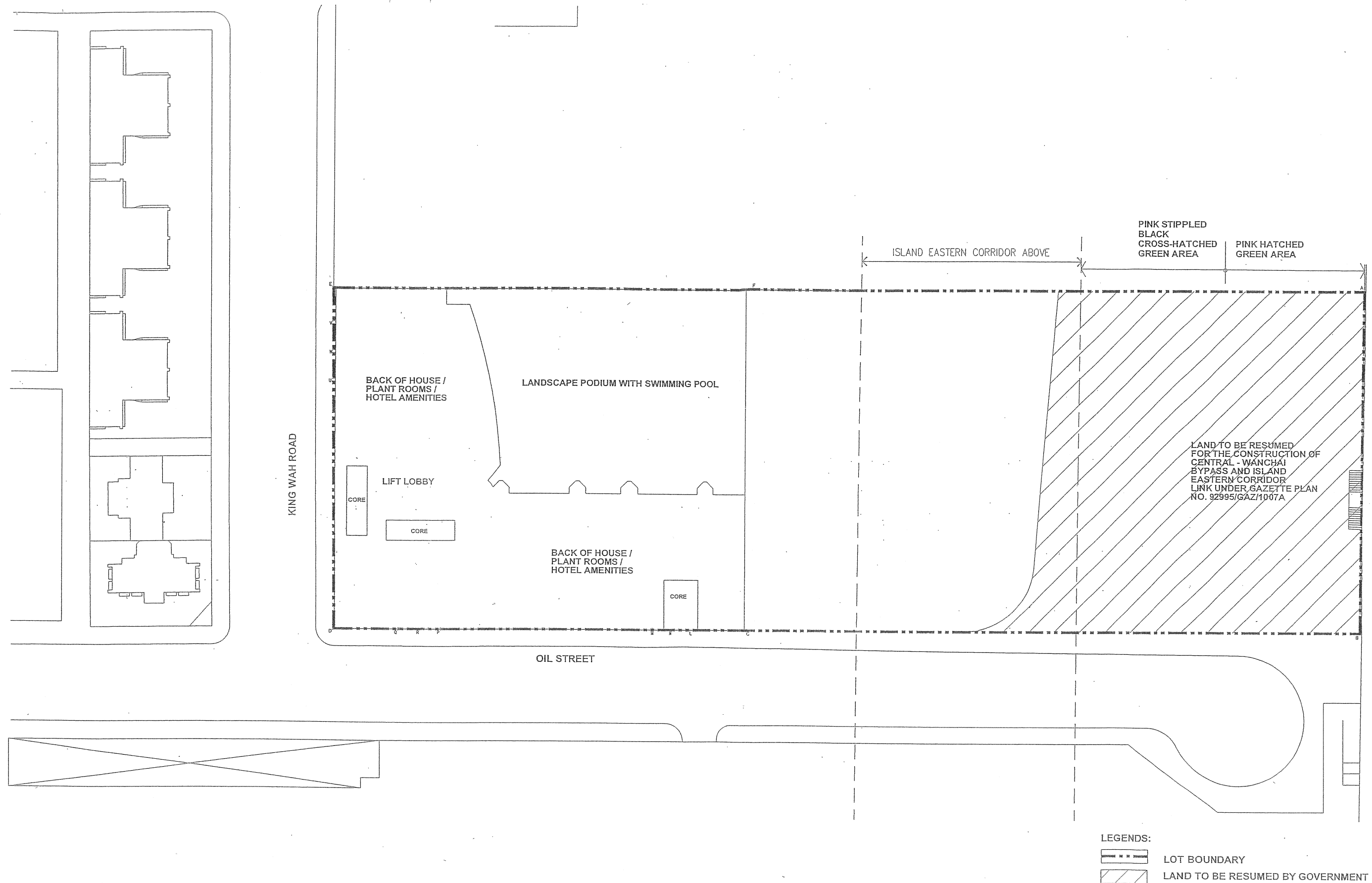
Figure 2.3  
1/F Plan (Hotel)  
Scale 1:750





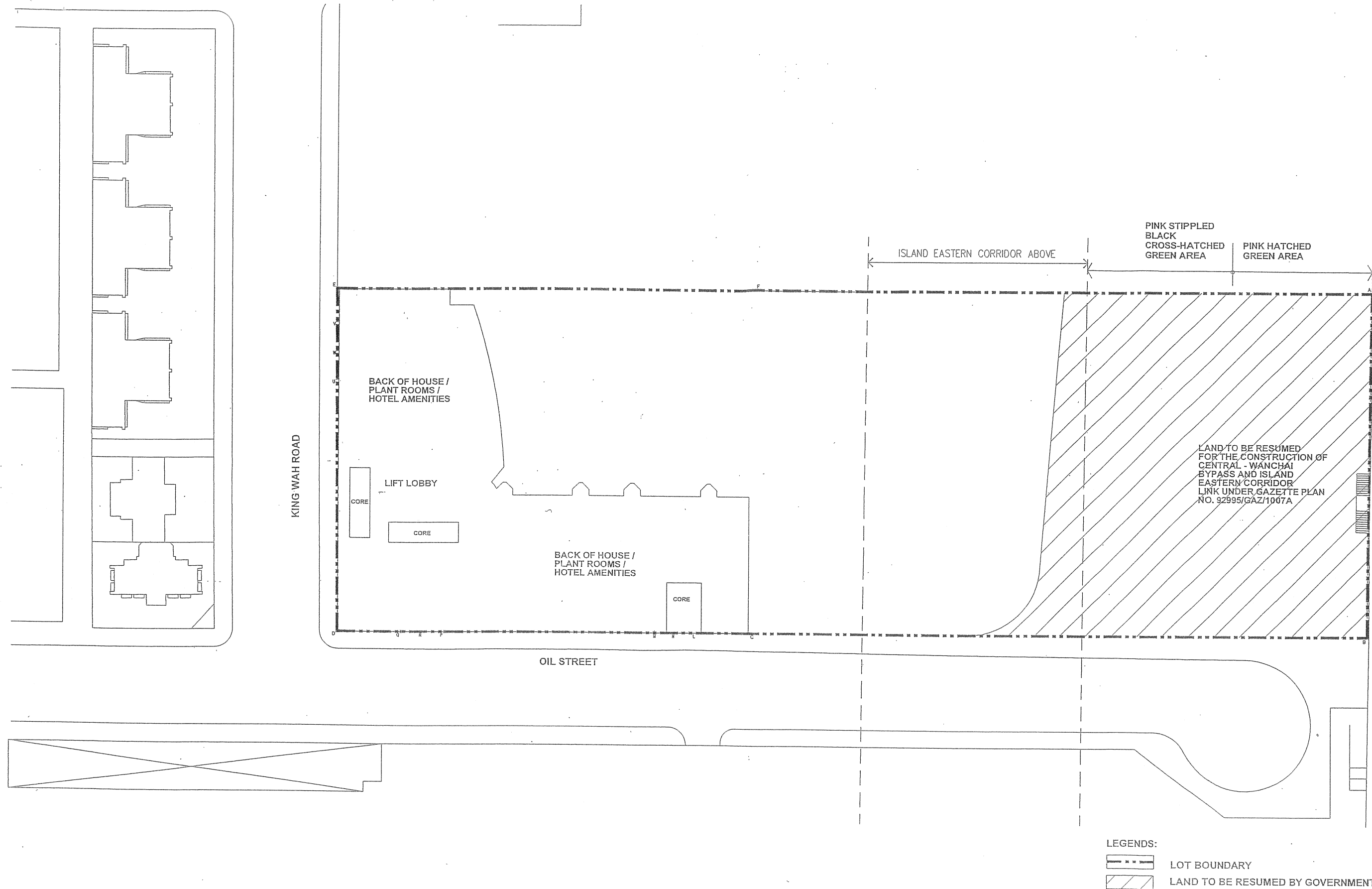
FOR 15-17 OIL STREET, NORTH POINT (LOT NO. I.L.7106S.A &EXT.)

Figure 2.4  
2/F Plan (Hotel)  
including mezzanine plant room floors  
Scale 1:750



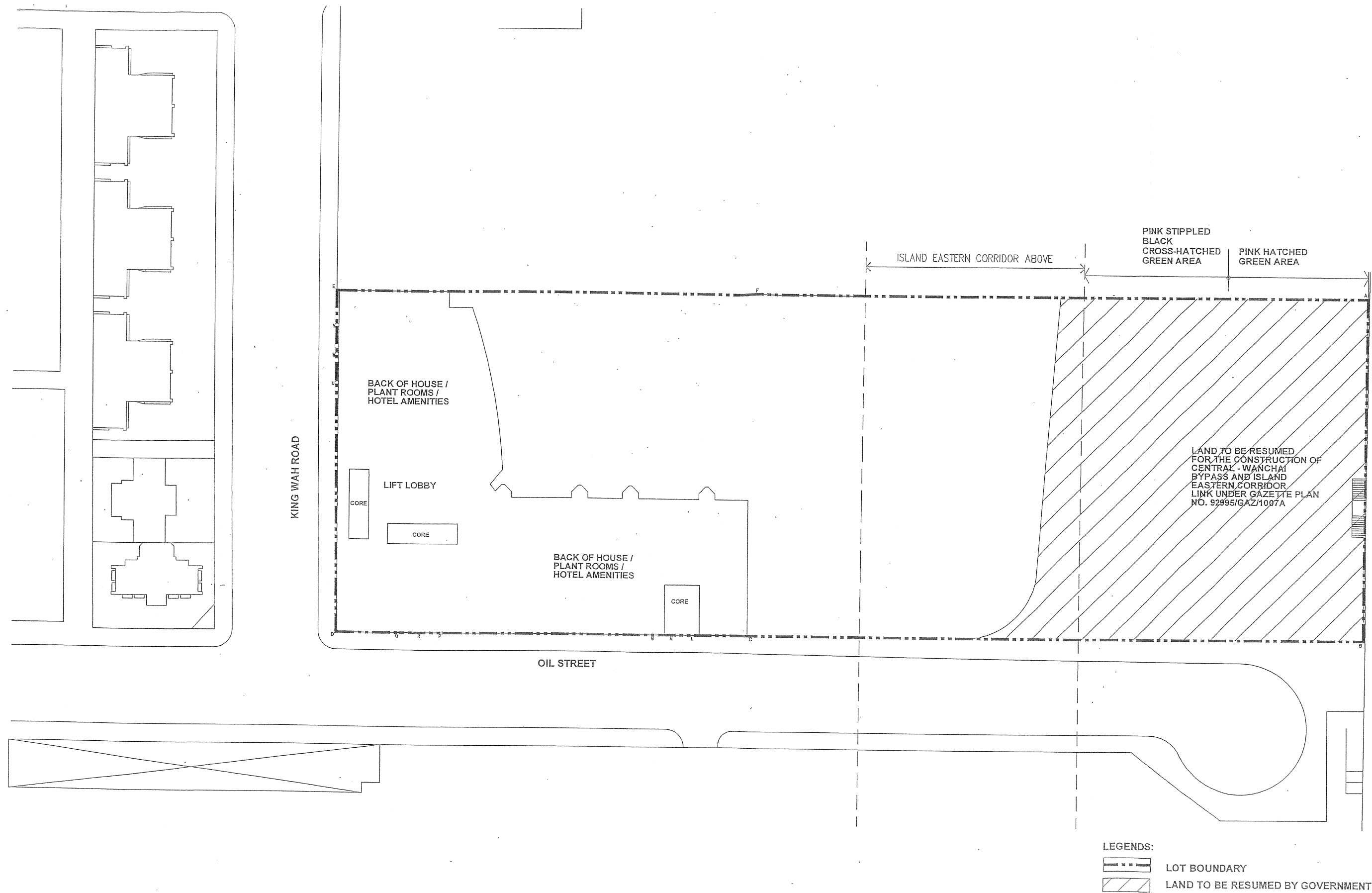
FOR 15-17 OIL STREET, NORTH POINT (LOT NO. I.L.7106S.A &EXT.)

Figure 2.5  
3/F Plan (Hotel)  
Scale 1:750



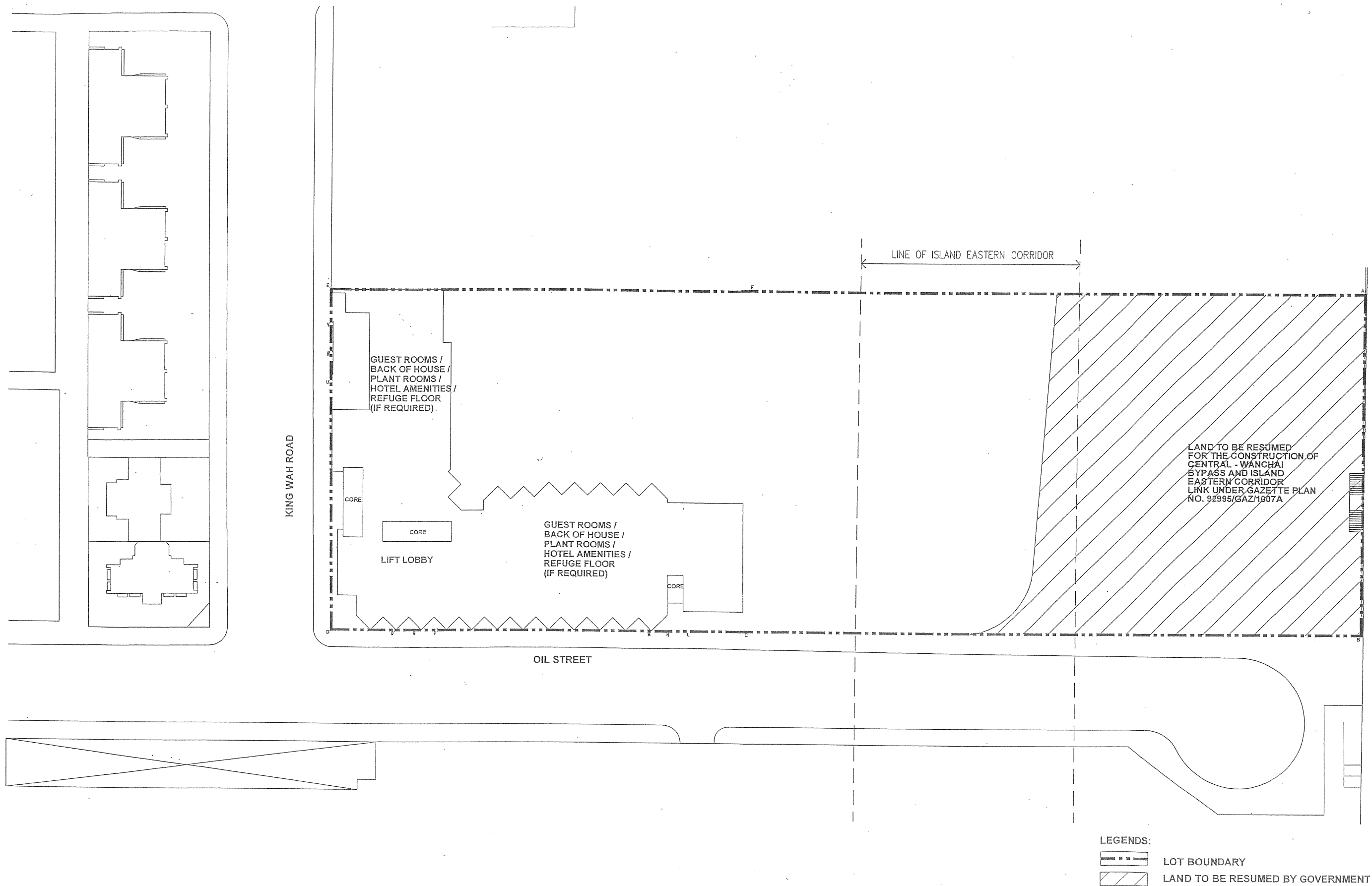
FOR 15-17 OIL STREET, NORTH POINT (LOT NO. I.L.7106S.A &EXT.)

Figure 2.6  
5/F Plan (Hotel)  
Scale 1:750



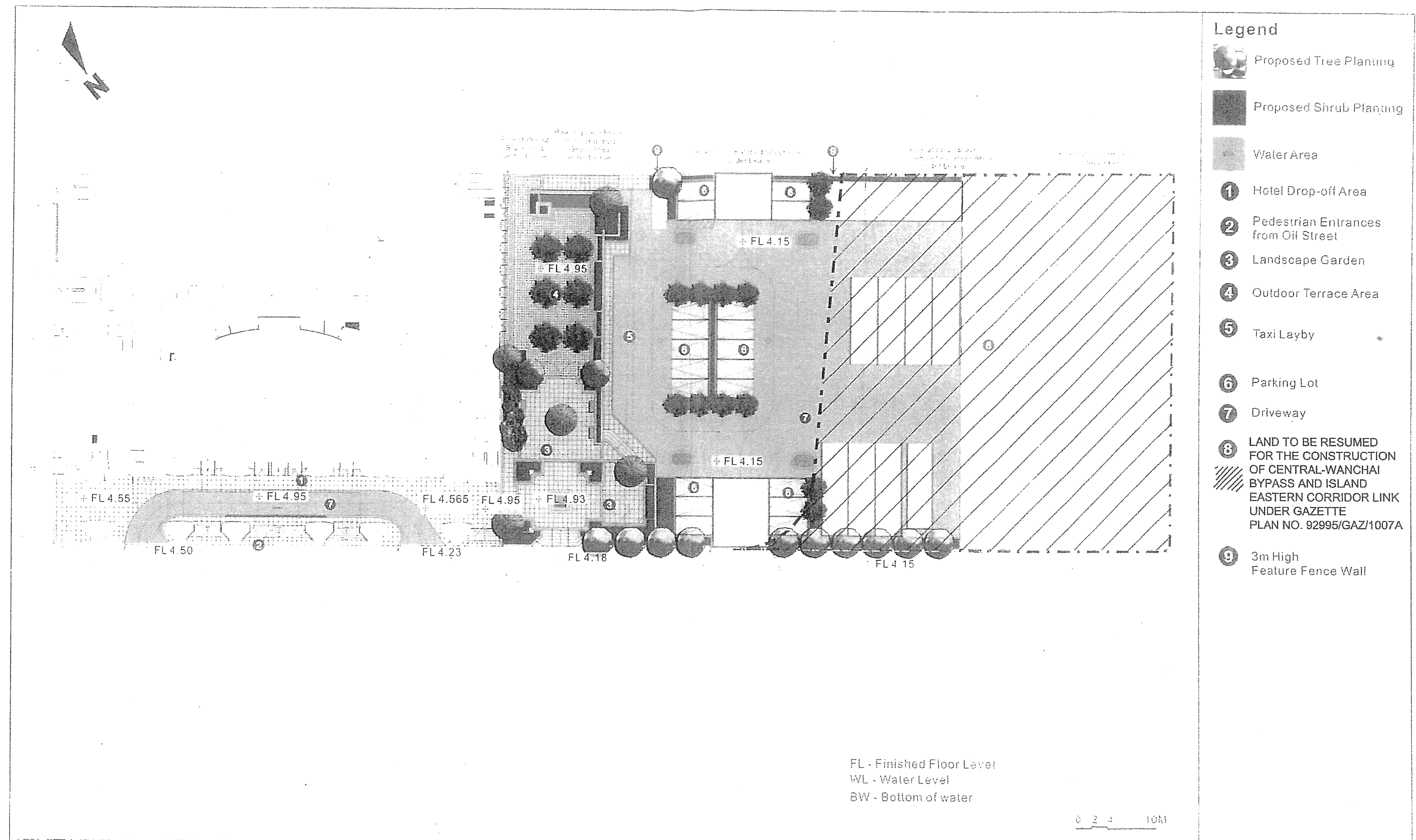
FOR 15-17 OIL STREET, NORTH POINT (LOT NO. I.L.7106S.A &EXT.)

Figure 2.7  
6/F Plan (Hotel)  
Scale 1:750



FOR 15-17 OIL STREET, NORTH POINT (LOT NO. I.L.7106S.A &EXT.)

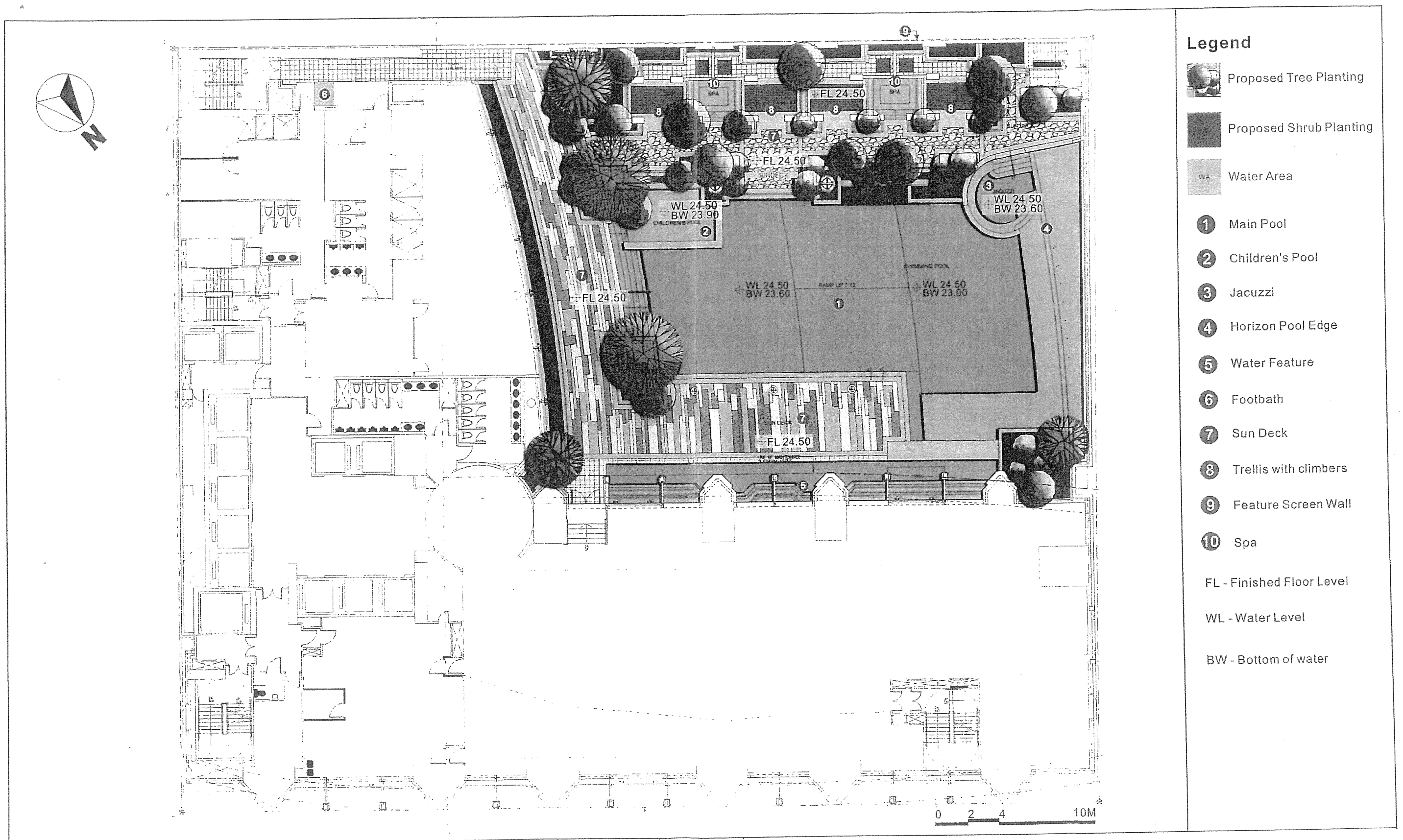
Figure 2.8  
Typical Plan for Tower (Hotel)  
Scale 1:750



FOR 15-17 OIL STREET, NORTH POINT (LOT NO. I.L.7106S.A &EXT.)

Figure 2.9  
LANDSCAPE MASTER PLAN





FOR 15-17 OIL STREET, NORTH POINT (LOT NO. I.L.7106S.A &EXT.)

Figure 2.10  
LANDSCAPE MASTER PLAN